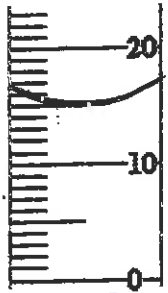
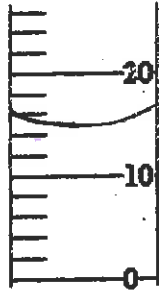


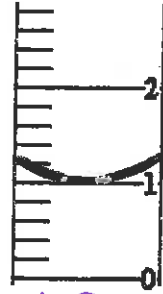
1) Determine the volume of the liquids in the following cylinders: (mL)



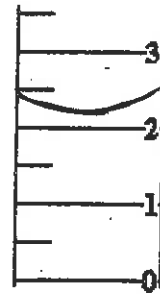
a) 15.0 mL



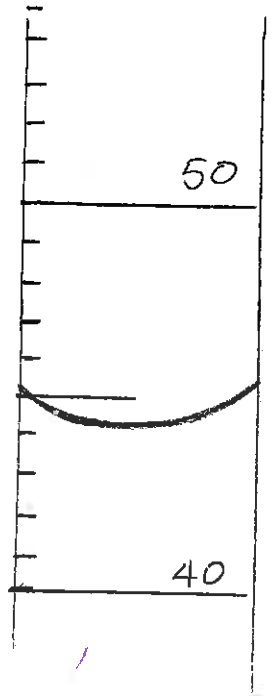
b) 15 mL



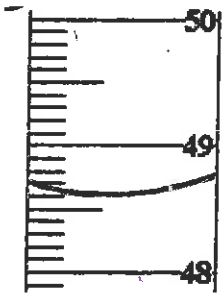
c) 1.0 mL



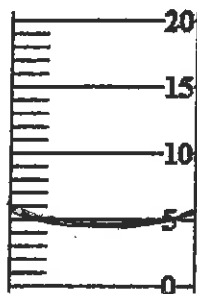
d) 2.2 mL



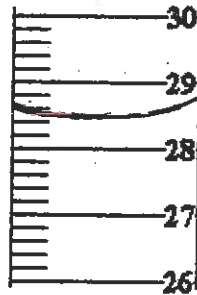
i) 44.0 mL



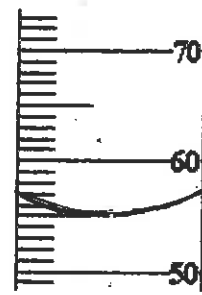
e) 48.60 mL



f) 4.5 mL

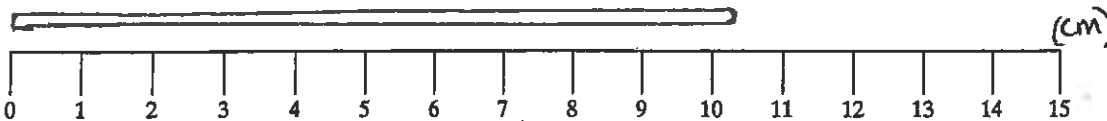


g) 28.5 mL



h) 55.0 mL

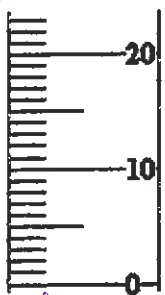
② 7.15 cm



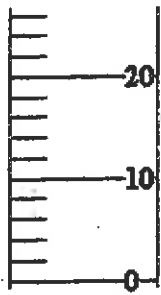
③ 10.5 cm

4

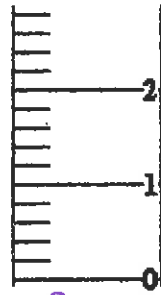
A graduated cylinder can have numerous scales. (mL)
Determine the value for the minor grids on the cylinder.



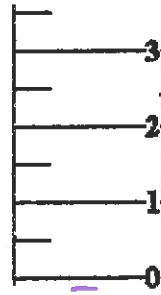
a) 1 mL



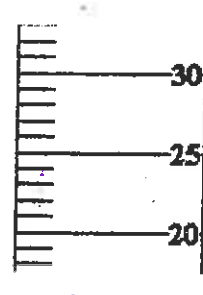
b) 2 mL



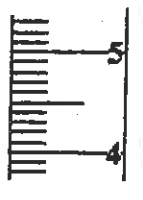
c) 0.2 mL



d) 0.5 mL



e) 1 mL



f) 0.1 mL